



Daptiv SSO and AFDS 2.0

ADFS 2.0 Setup Guide for Daptiv SSO

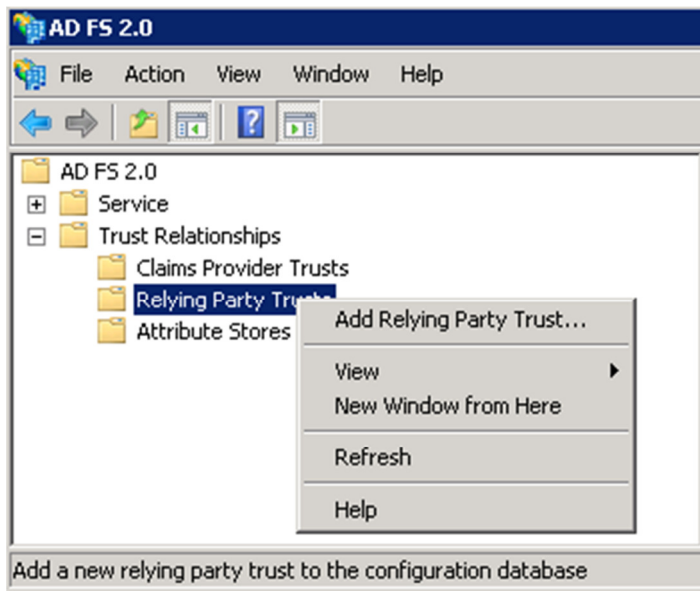
INTRODUCTION

ADFS 2.0 is a widely used SSO software available free from Microsoft. Because of the prevalence of this software, we have found that many of our clients utilize ADFS 2.0. This guide is provided as general guidance on how to configure ADFS 2.0 with Daptiv only; Daptiv does not provide support for ADFS 2.0. If you need software or hardware troubleshooting, please contact Microsoft directly.

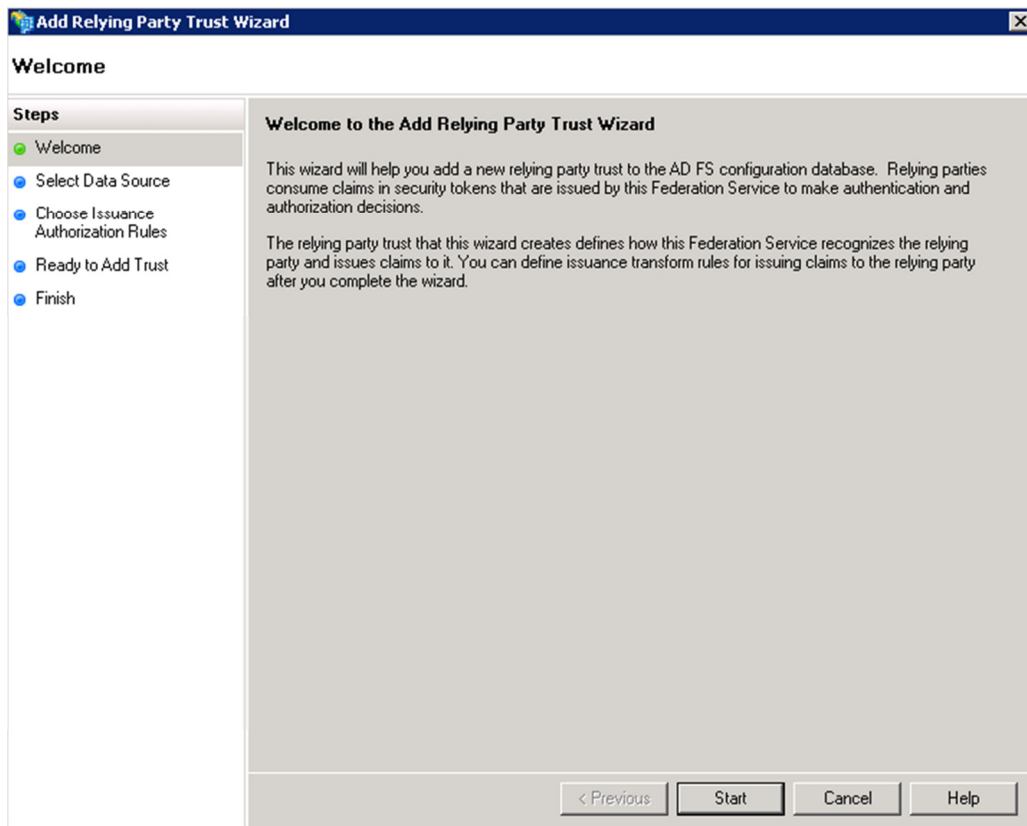
This guide assumes that you have ADFS 2.0 installed on a machine already, with or without other SSO integrations set up.

Steps:

- 1) Open the ADFS 2.0 Management Console from the Administrative Tools menu, and choose to 'Add Relying Party Trust...'



- 2) Click through the introductory screen.



- 3) Choose to import data from a file, and select the location of the metadata XML file.

Add Relying Party Trust Wizard

Select Data Source

Steps

- Welcome
- Select Data Source
- Specify Display Name
- Choose Profile
- Configure Certificate
- Configure URL
- Configure Identifiers
- Choose Issuance Authorization Rules
- Ready to Add Trust
- Finish

Select an option that this wizard will use to obtain data about this relying party:

☐ Import data about the relying party published online or on a local network

Use this option to import the necessary data and certificates from a relying party organization that publishes its federation metadata online or on a local network.

Federation metadata address (host name or URL):

Example: fs.contoso.com or https://www.contoso.com/app

☒ Import data about the relying party from a file

Use this option to import the necessary data and certificates from a relying party organization that has exported its federation metadata to a file. Ensure that this file is from a trusted source. This wizard will not validate the source of the file.

Federation metadata file location:

☐ Enter data about the relying party manually

Use this option to manually input the necessary data about this relying party organization.

< Previous Next > Cancel Help

4) Choose a display name for this integration.

Add Relying Party Trust Wizard

Specify Display Name

Steps

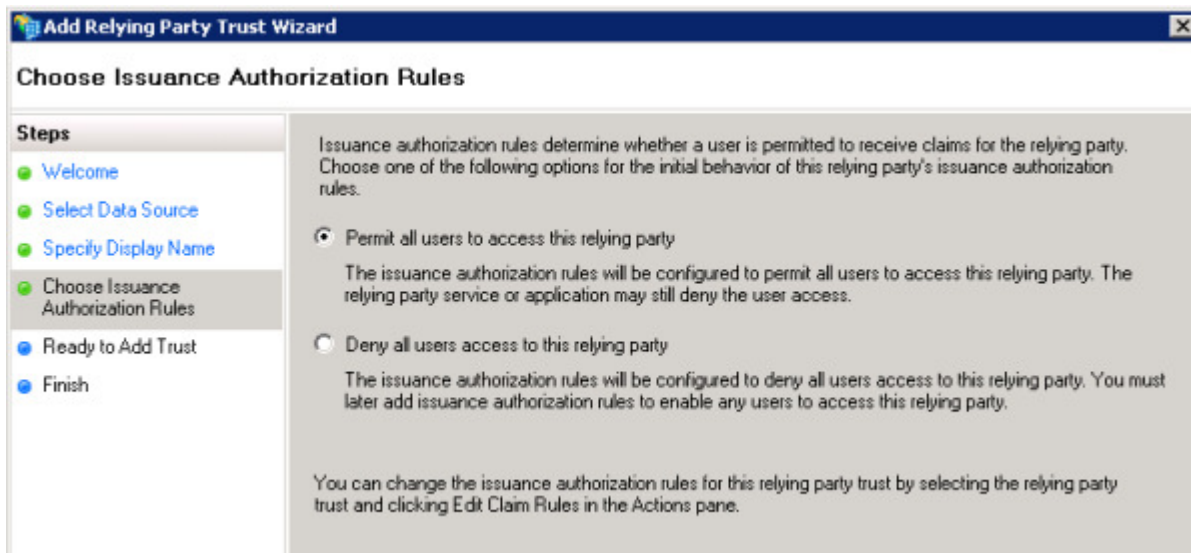
- Welcome
- Select Data Source
- Specify Display Name
- Choose Issuance Authorization Rules
- Ready to Add Trust
- Finish

Type the display name and any optional notes for this relying party.

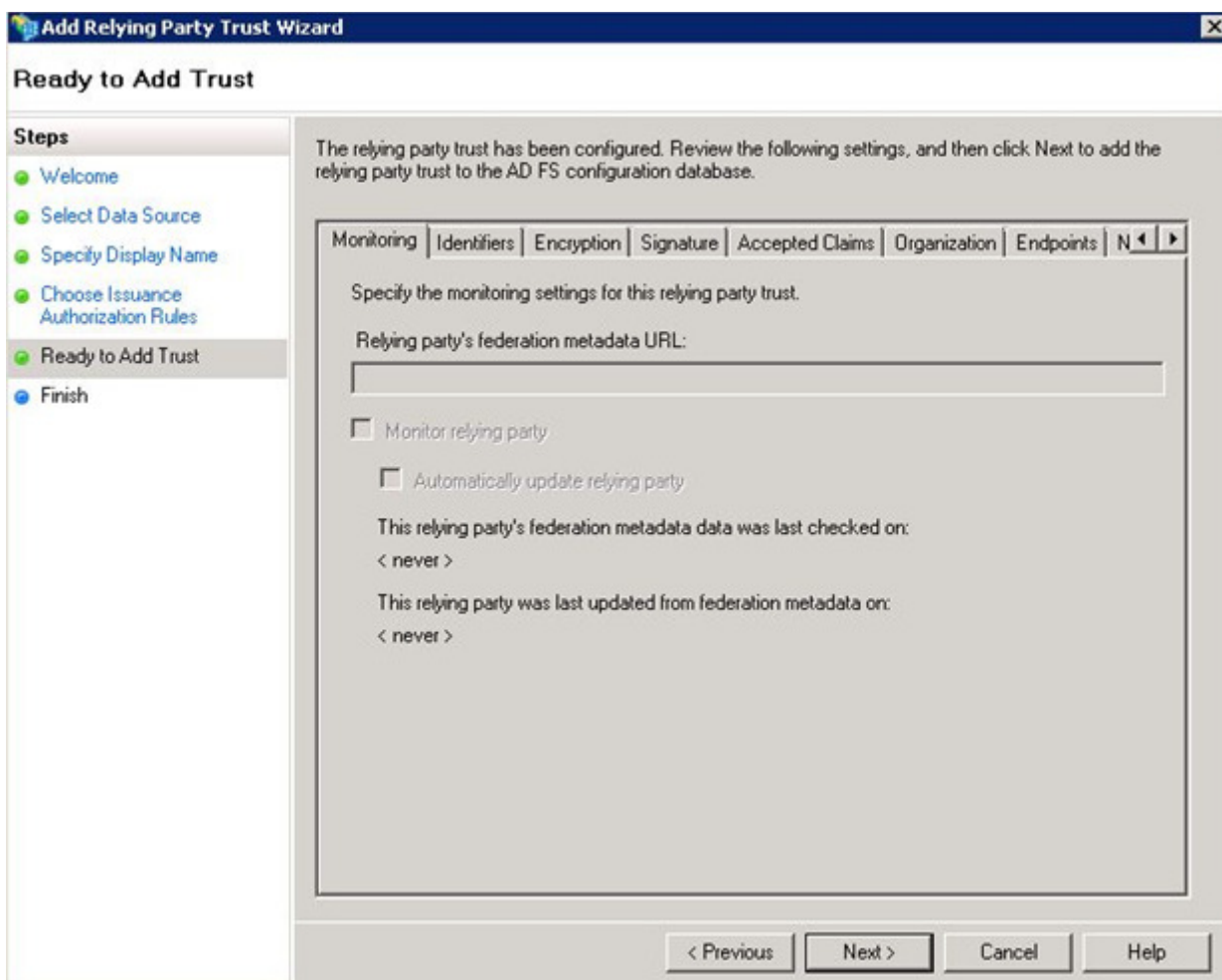
Display name:

Notes:

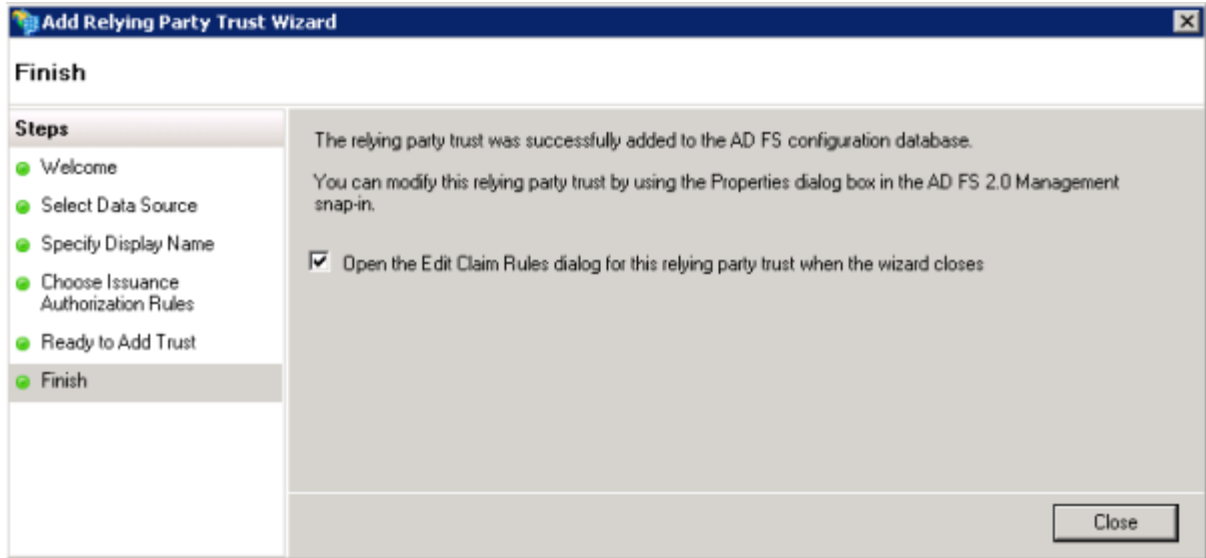
5) Choose your configuration for access; it is usually to allow all users access.



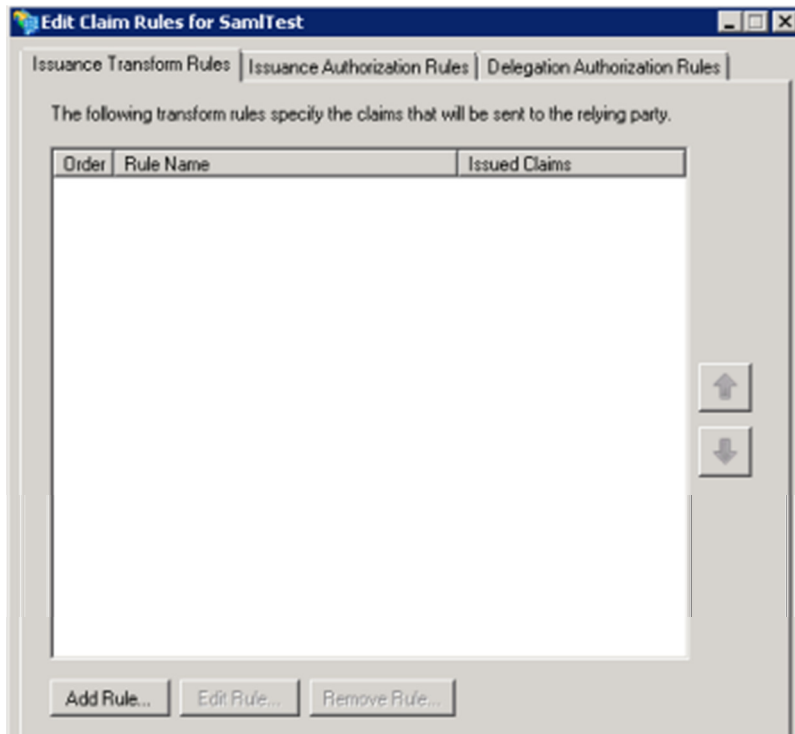
- 6) View a summary of the information. Note that in this summary page, some settings cannot be changed and we must come back to the configuration page later.



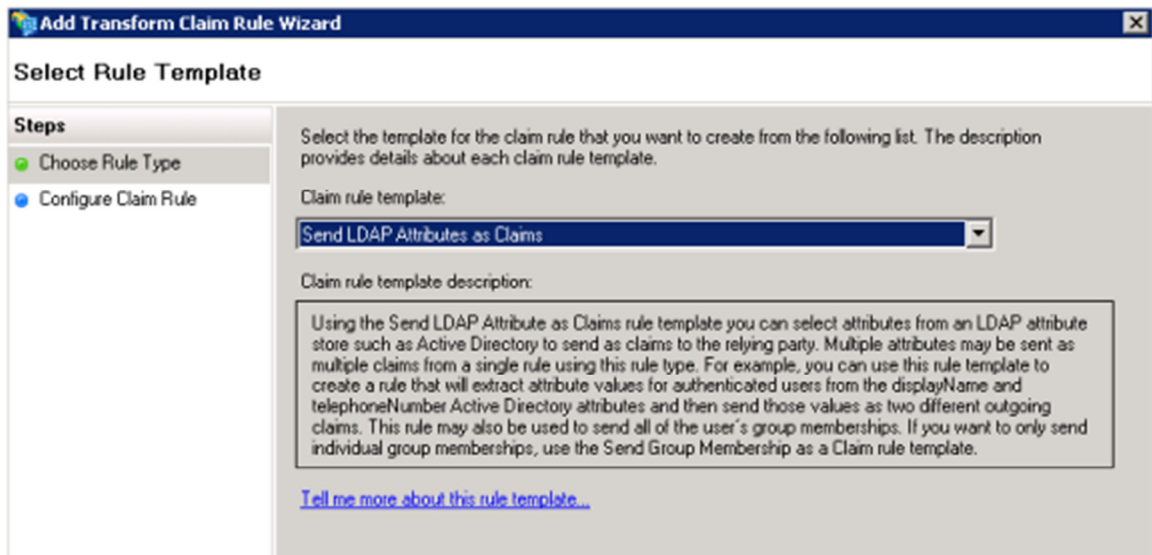
- 7) Choose to open the Claims window when complete.



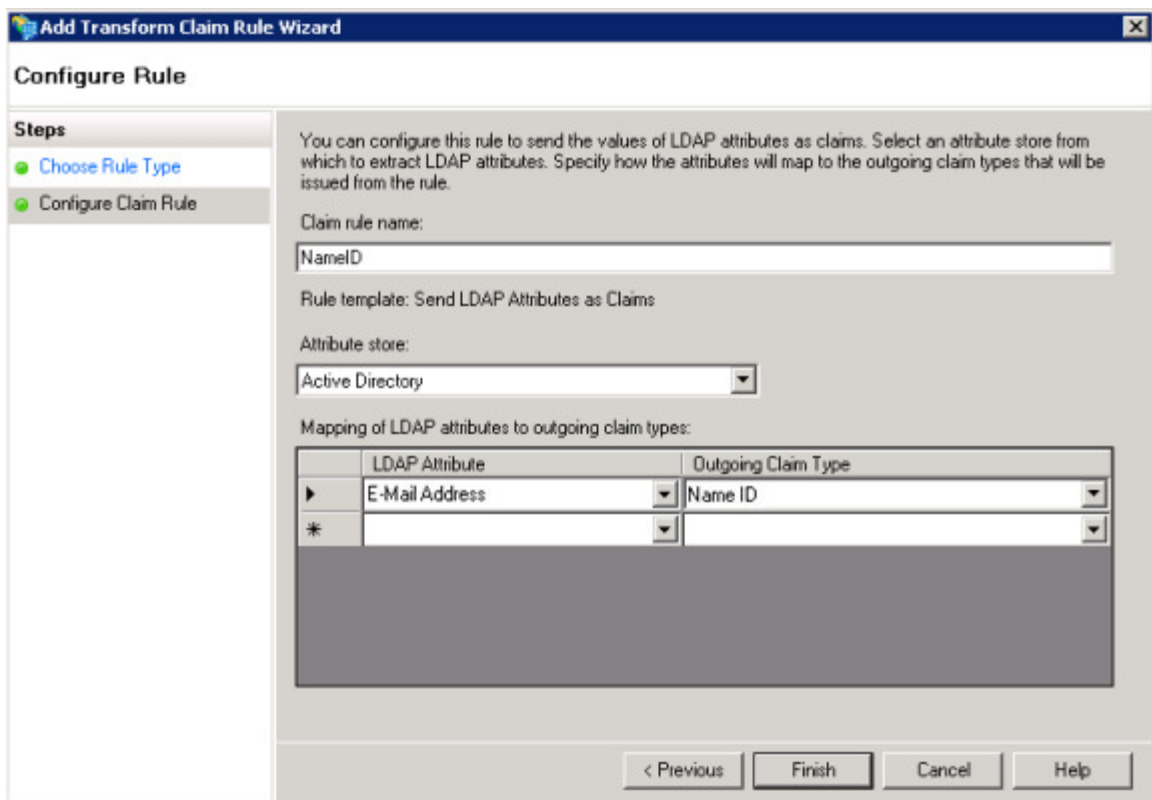
- 8) Choose to add a new rule.



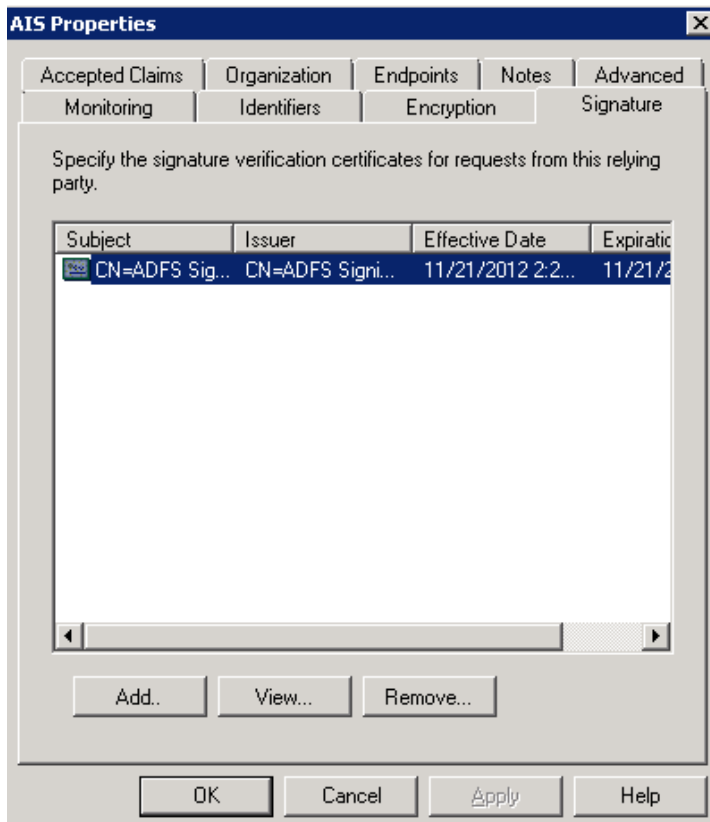
- 9) Choose to send LDAP Attributes as Claims.



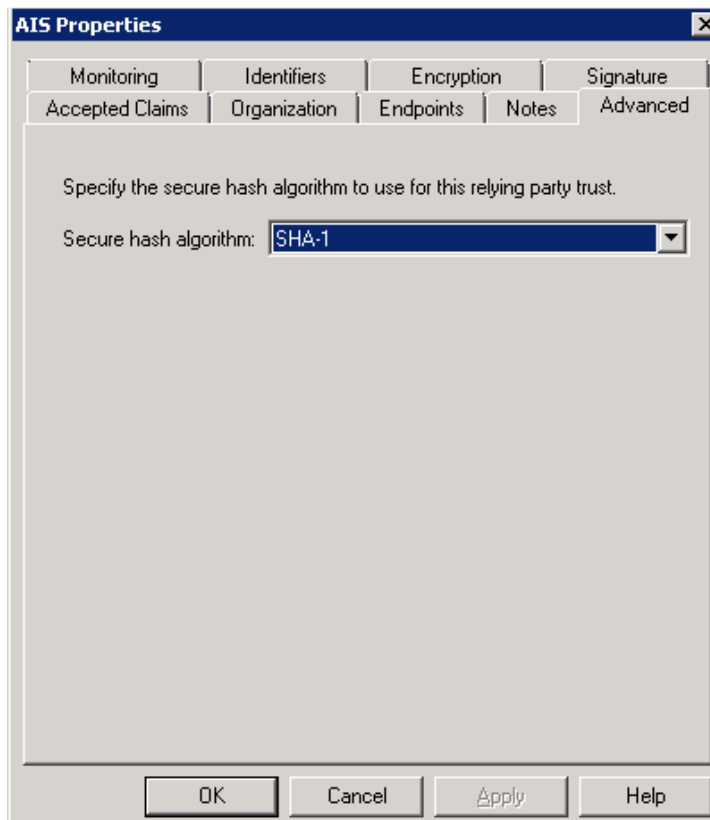
- 10) Name the Claim, and then set the attributes below so that it pulls from the Active Directory. Additionally, map the E-mail Addresses attribute as the NameID.



- 11) Click Finish in the Claim Rule Wizard, and go back to the ADFS 2.0 Management Console. View the Properties for the Daptiv entry. You'll see a screen with multiple tabs.
- 12) On the Signature tab, make sure that the certificate listed here is the same as the certificate you have sent to Daptiv Support (as one of the required pieces of information). If no certificate is listed, then you'll need to select one. Note that the example below contains a certificate, but you will have a different name/value.



13) On the Advanced tab, change the algorithm to SHA1. This is the encryption algorithm



- 14) After saving the changes to the properties, you are ready to send the required information to Daptiv Support, if you haven't already.
- 15) After Daptiv Support confirms that the SSO information has been entered, test your Daptiv SSO integration. By default, ADFS 2.0 has a sign-in URL of: <https://<**ADFS FQDN**>/adfs/ls/IdpInitiatedSignon.aspx> where <ADFS FQDN> is the address of your ADFS 2.0 server.